



OFFICAL EDUCATION

2026

Two Person Positioning

USA[®]
LACROSSE



RECOGNIZED SPORT
ORGANIZATION

Goals of Two Person Positioning



To put us in the best position to make the calls that allow us to keep the game safe and fair.

To work as a TEAM to cover all areas of the field efficiently and consistently.

Role of Officials

Ensure the game is...

Safe

Fair

Fun

Fluid!



SCORER'S TABLE

Table Side Official



"Far Side" Official

Should be the more experienced of the team

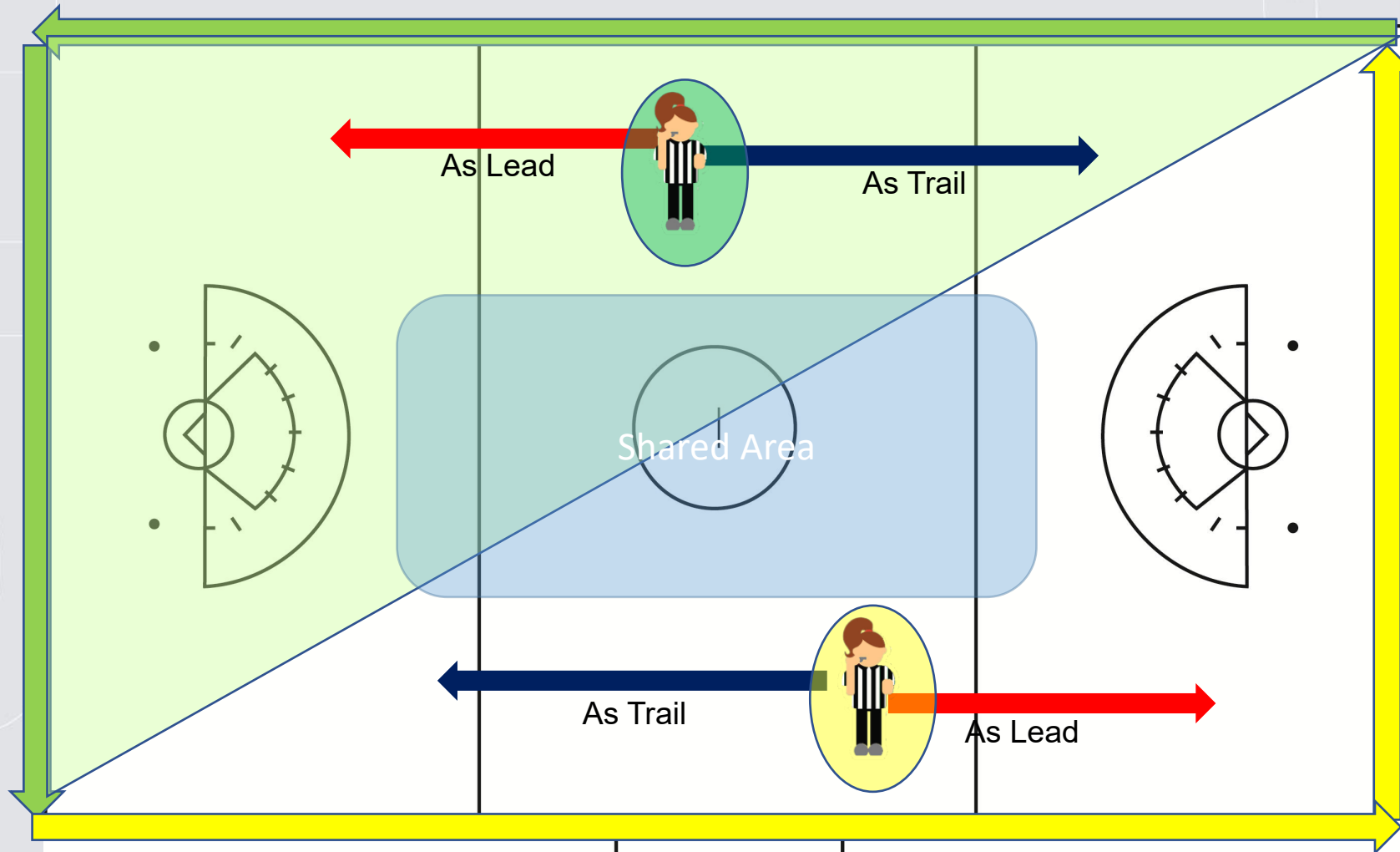
Will run the Coaches'/Captains' Meeting

Will discuss responsibilities with the Timer and Scorer

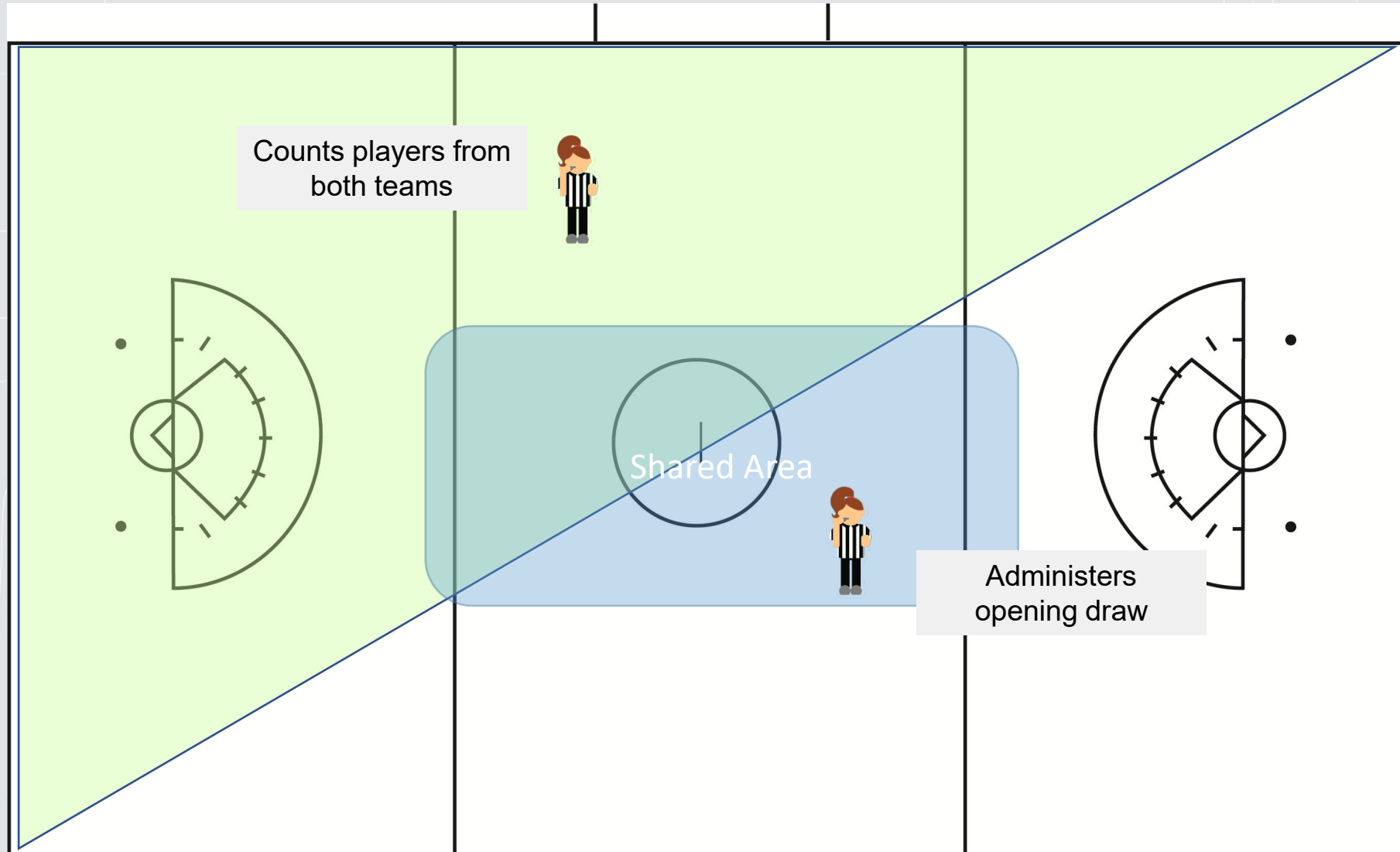
May be less experienced

Will participate in all pre-game discussions and meetings

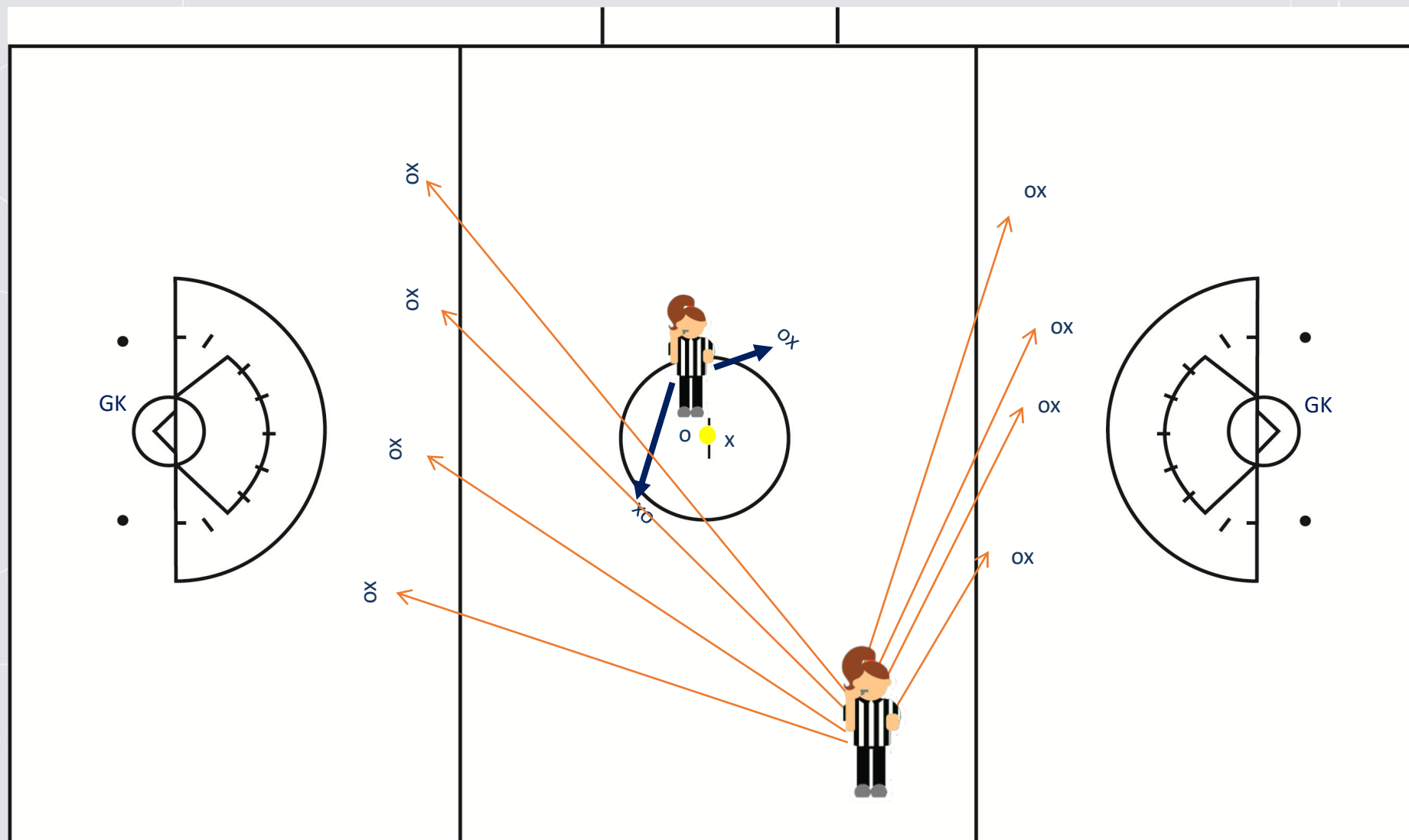
Areas of Responsibility



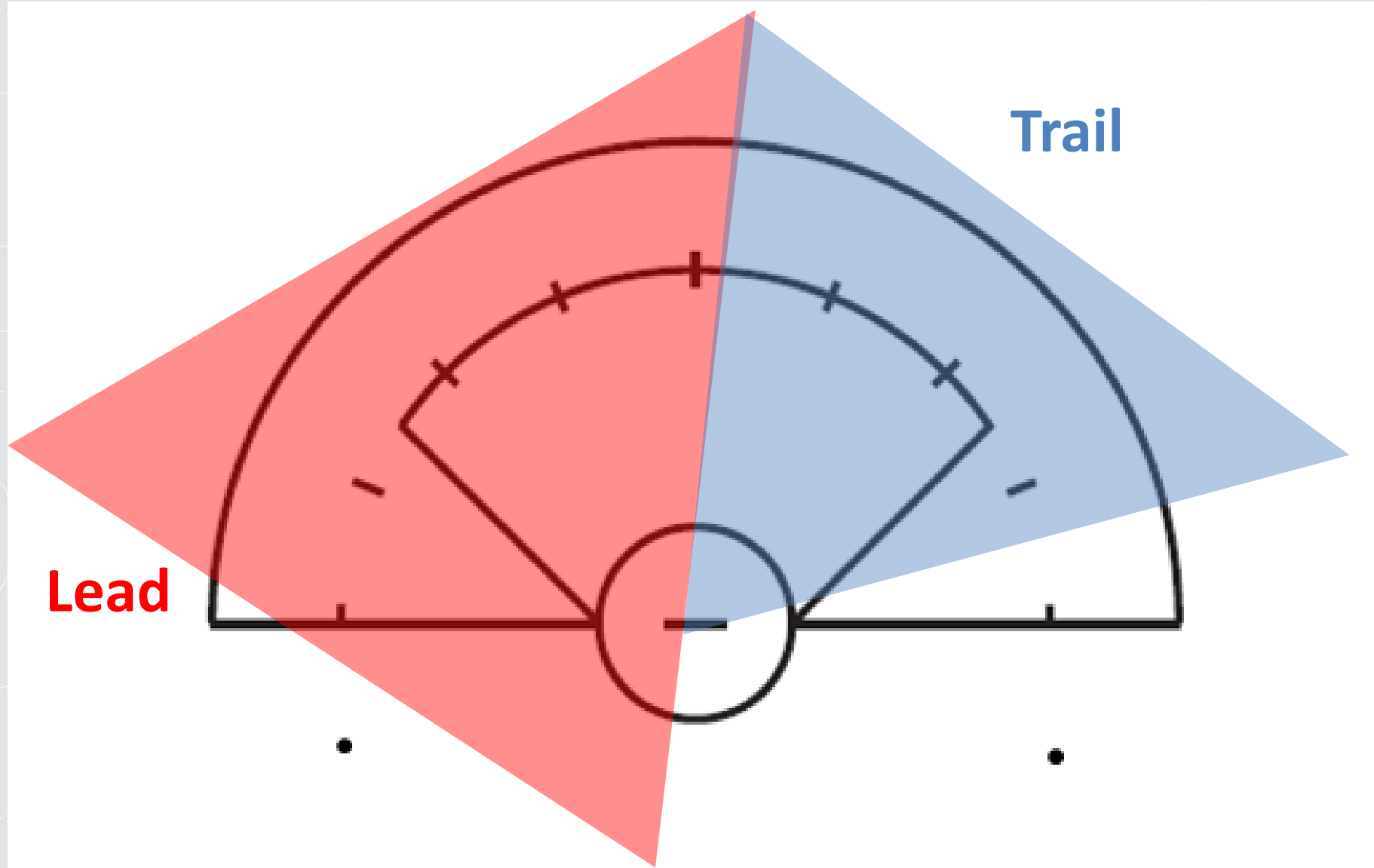
Areas of Responsibility - The Draw



Areas of Responsibility - The Draw



CSA Responsibilities



CSA Responsibilities

Lead

- ✓ On-Ball Fouls
- ✓ Shooting Space on your side of the Arc
- ✓ Goal Circle Activity
- ✓ Endline and Sideline Boundaries
- ✓ Off Ball Fouls on your side of the Arc

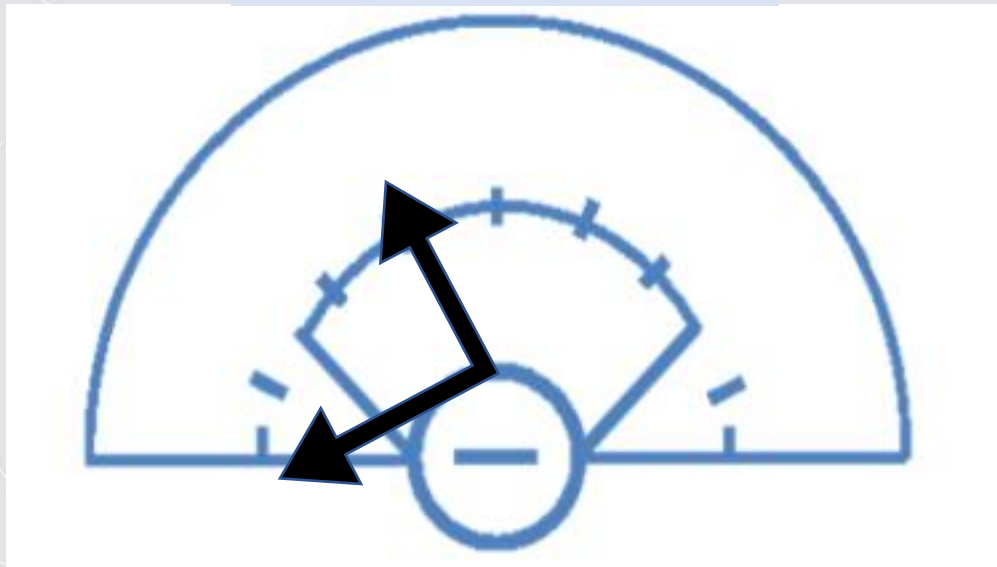
Trail

- ✓ Off-Ball Fouls
- ✓ Shooting Space on your side of the Arc
- ✓ Restraining Line Violations
- ✓ Dangerous Propelling/Dangerous Follow Through

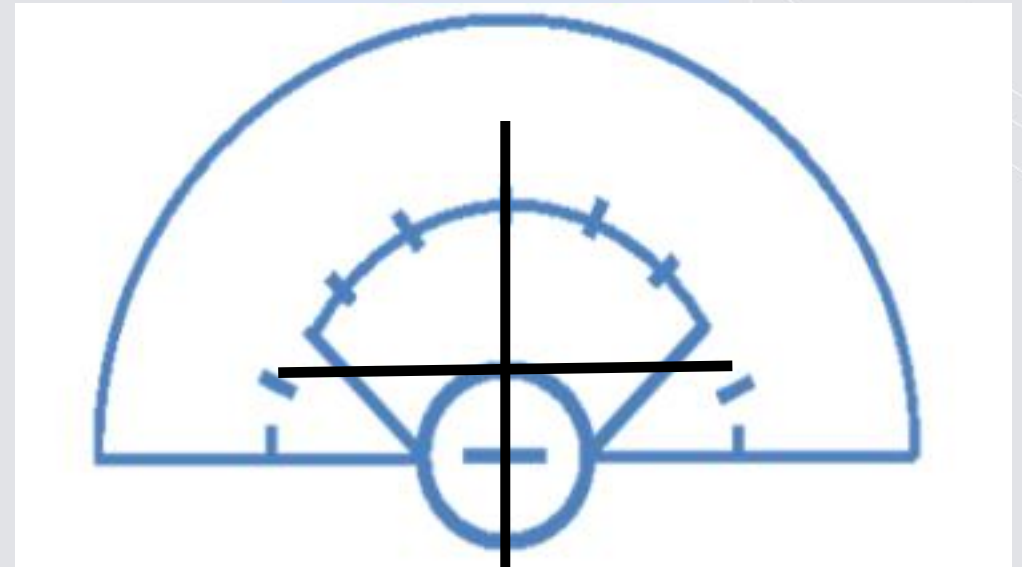
Lead Positioning

The Lead's purpose of movement is to see the ball and space between the ball carrier and her defenders

TANGENT

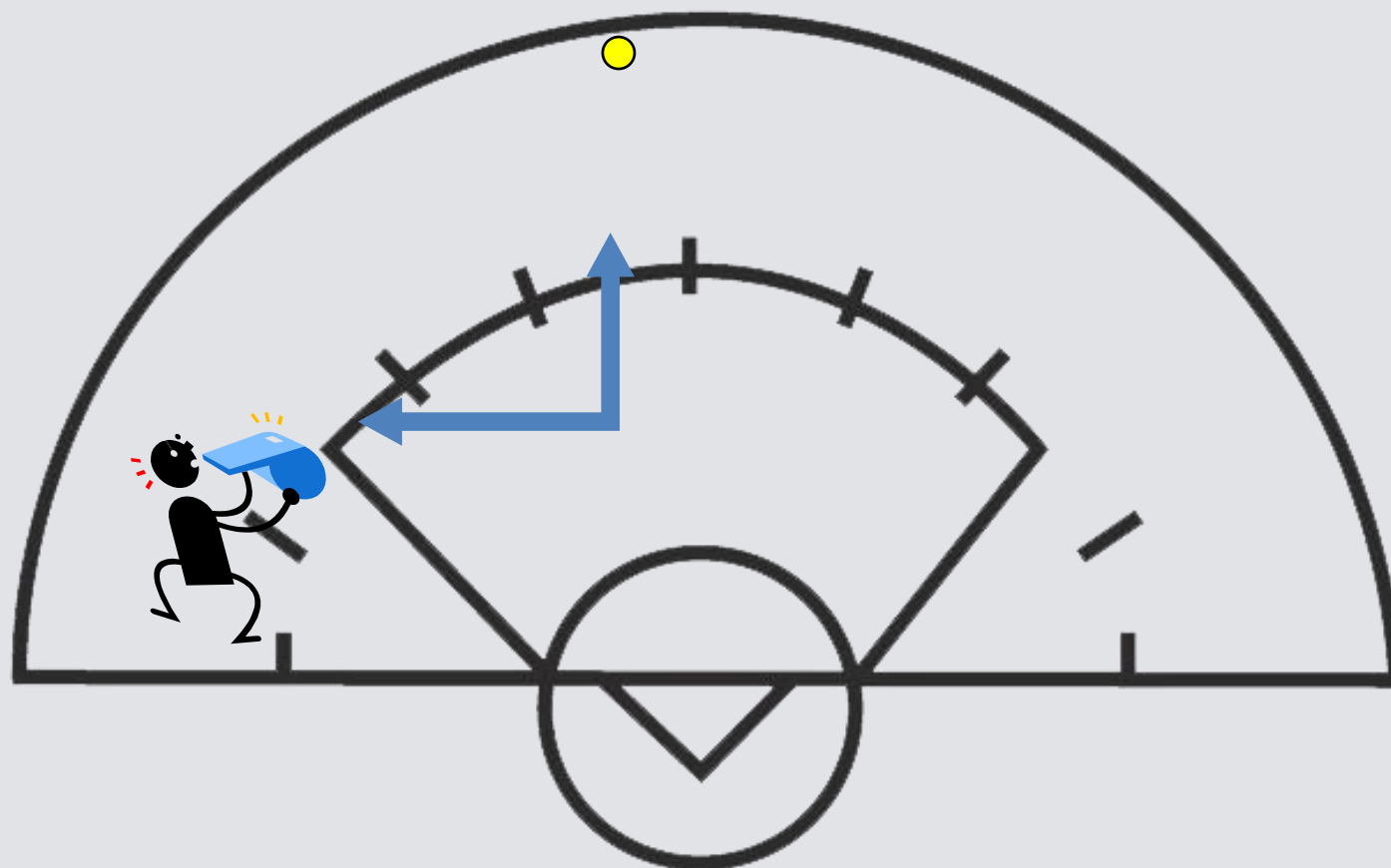


QUADRANTS

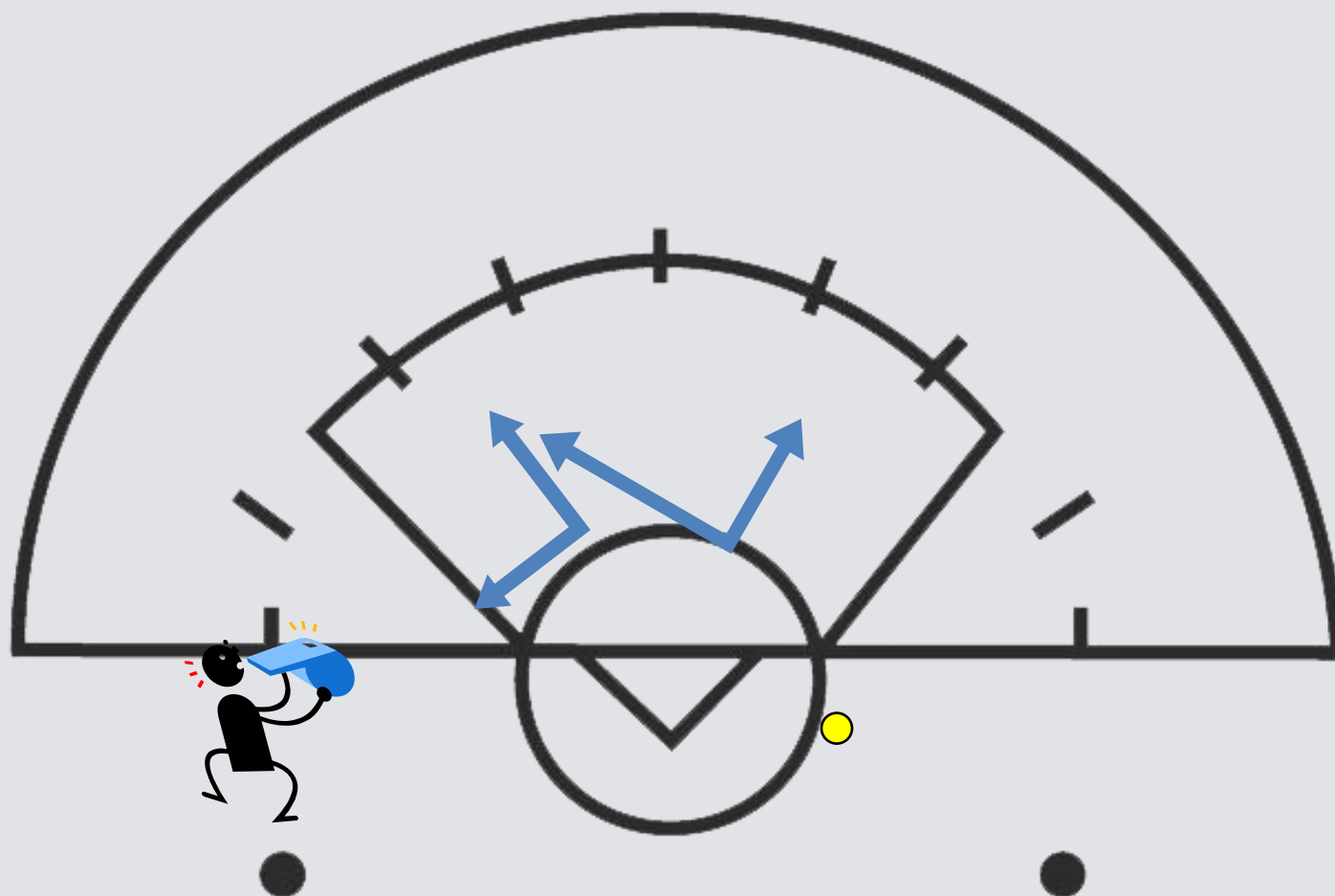


Use the approach that works best for you!

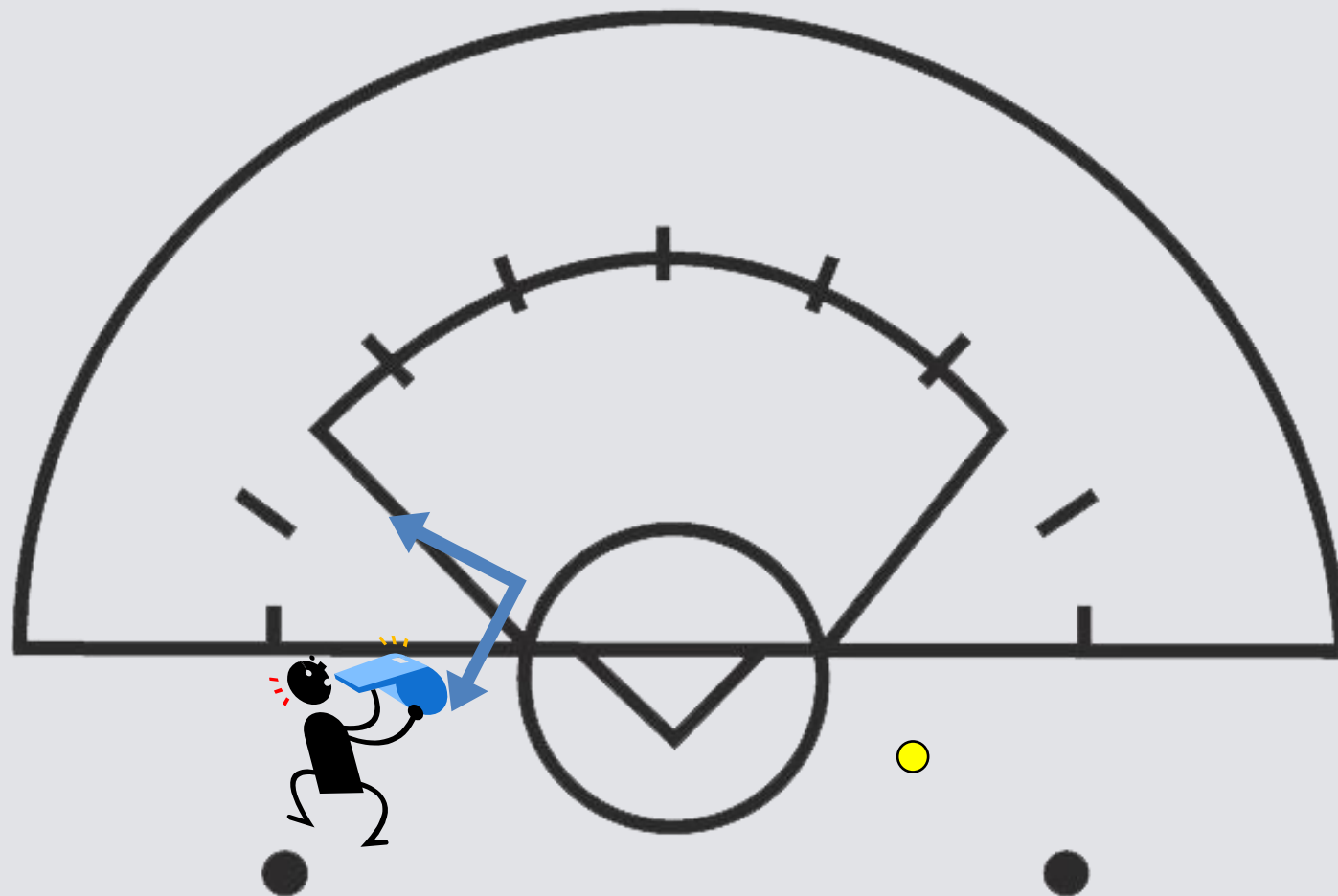
Lead Tangent Positioning



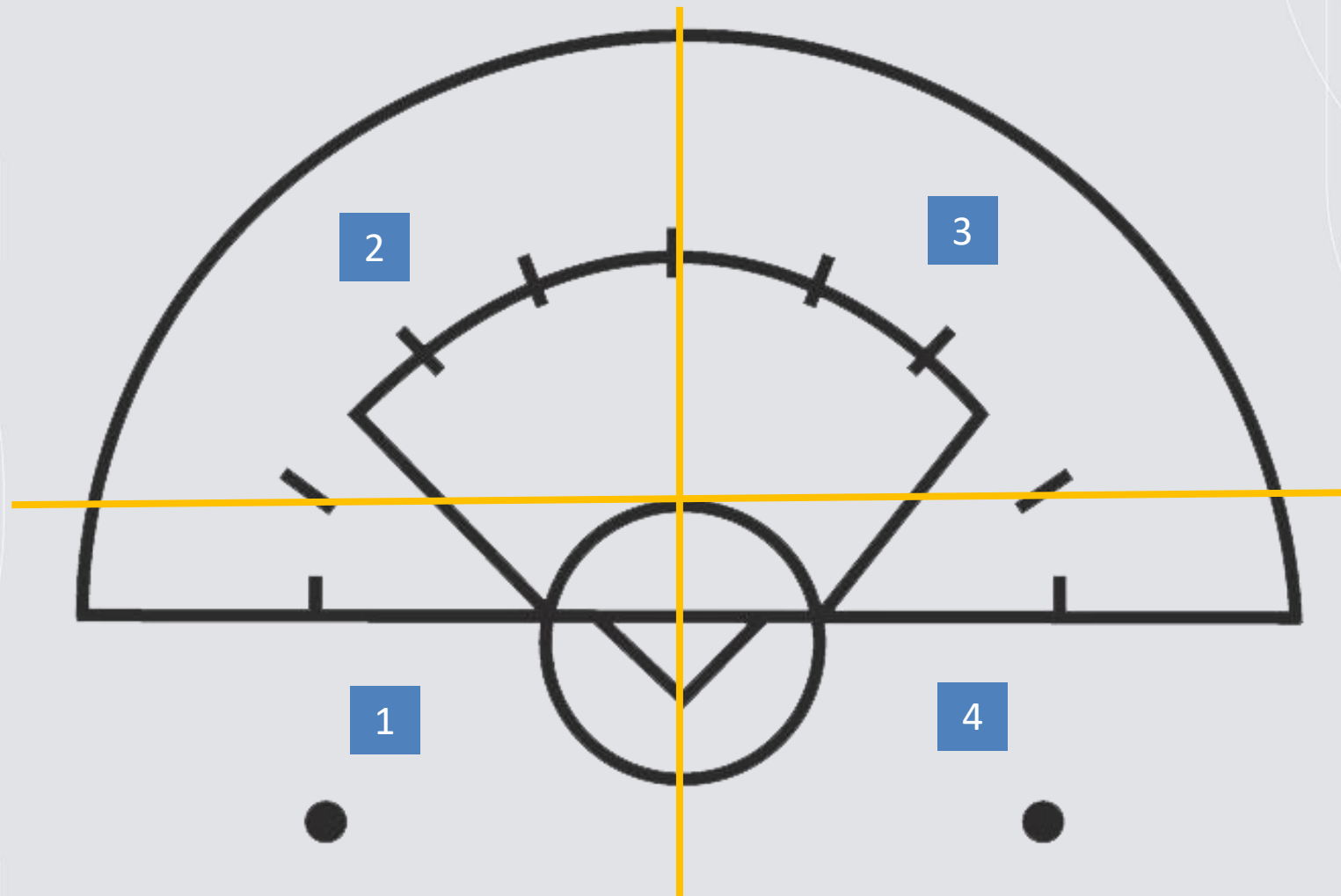
Lead Tangent Positioning



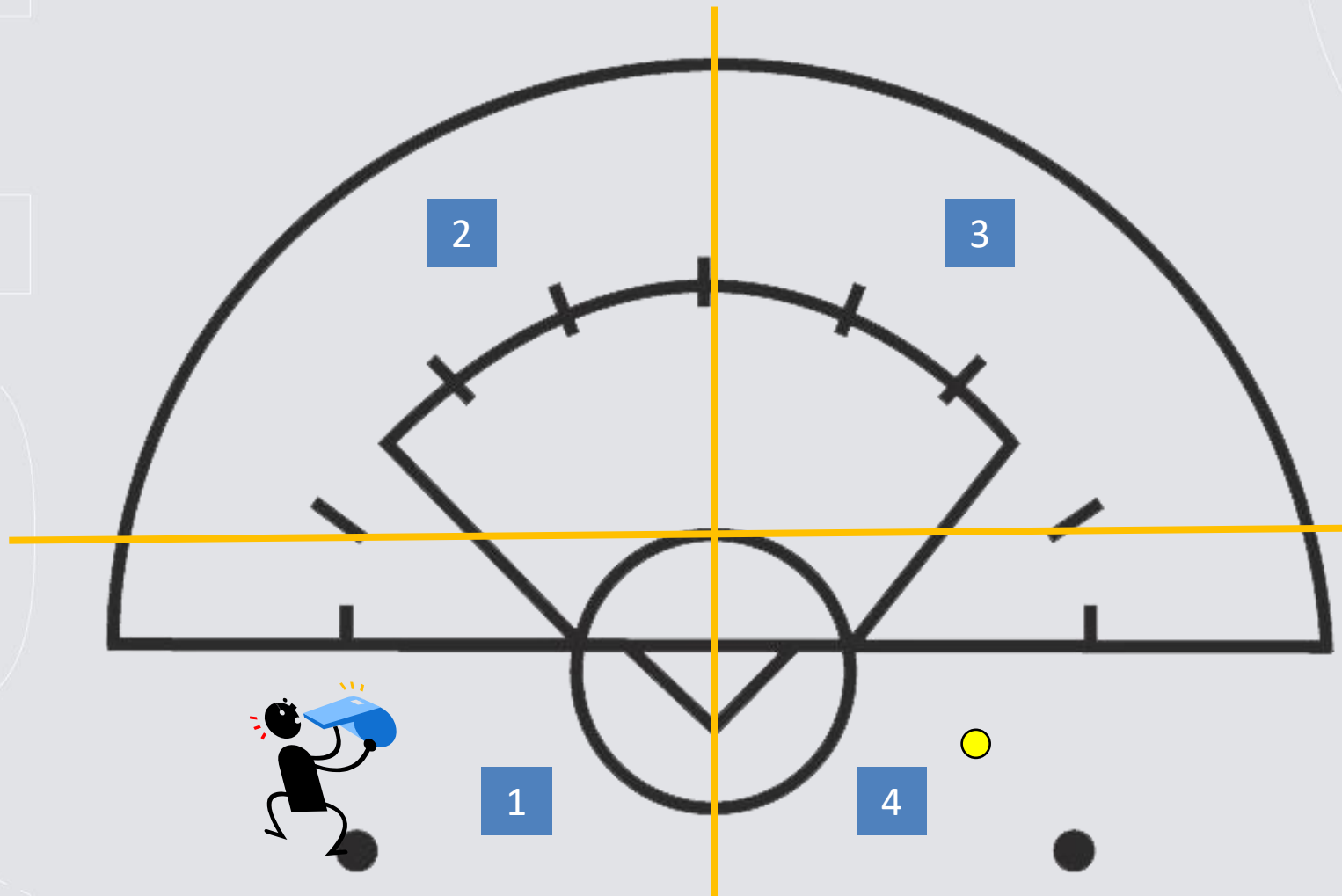
Lead Tangent Positioning



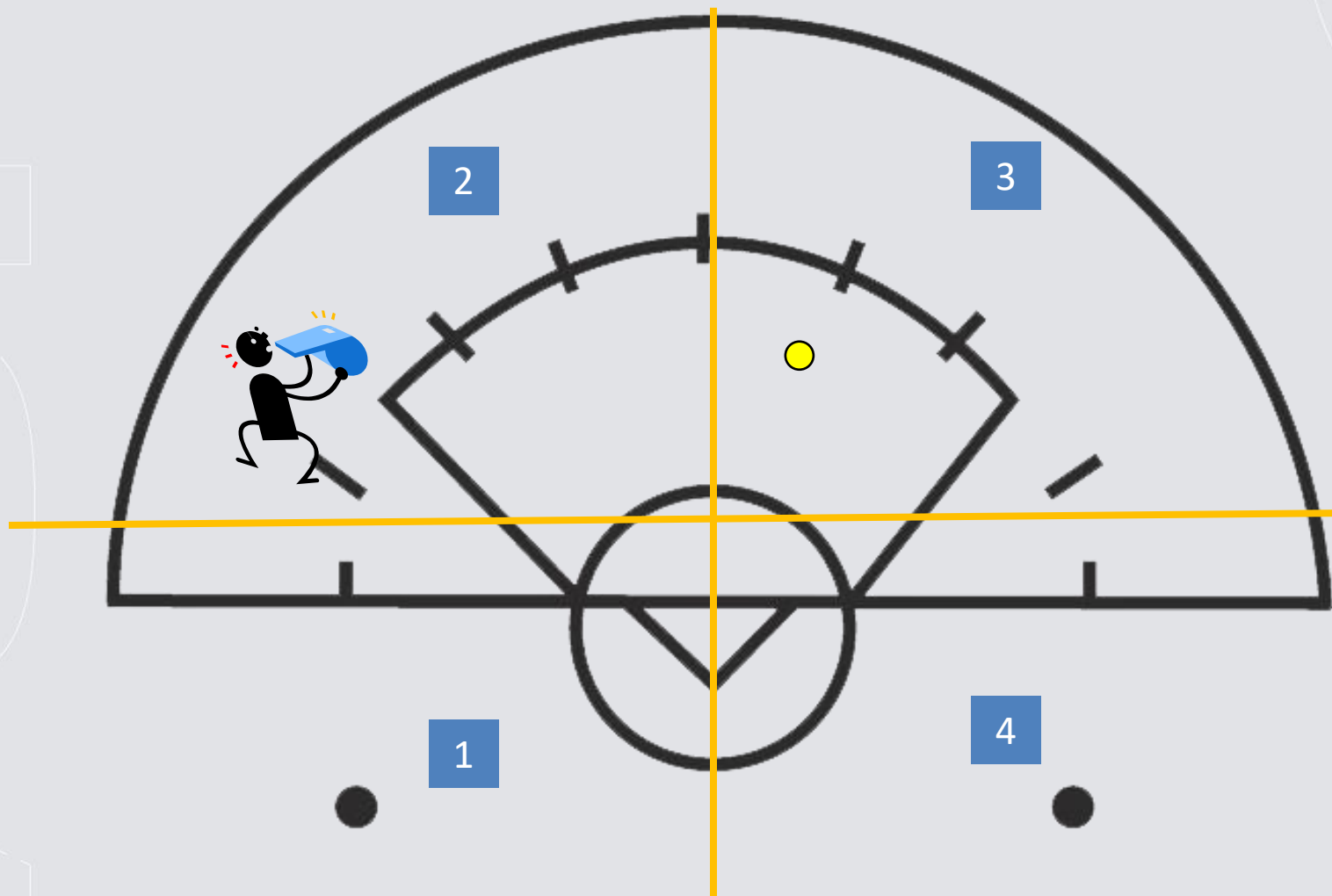
Lead Quadrant Positioning



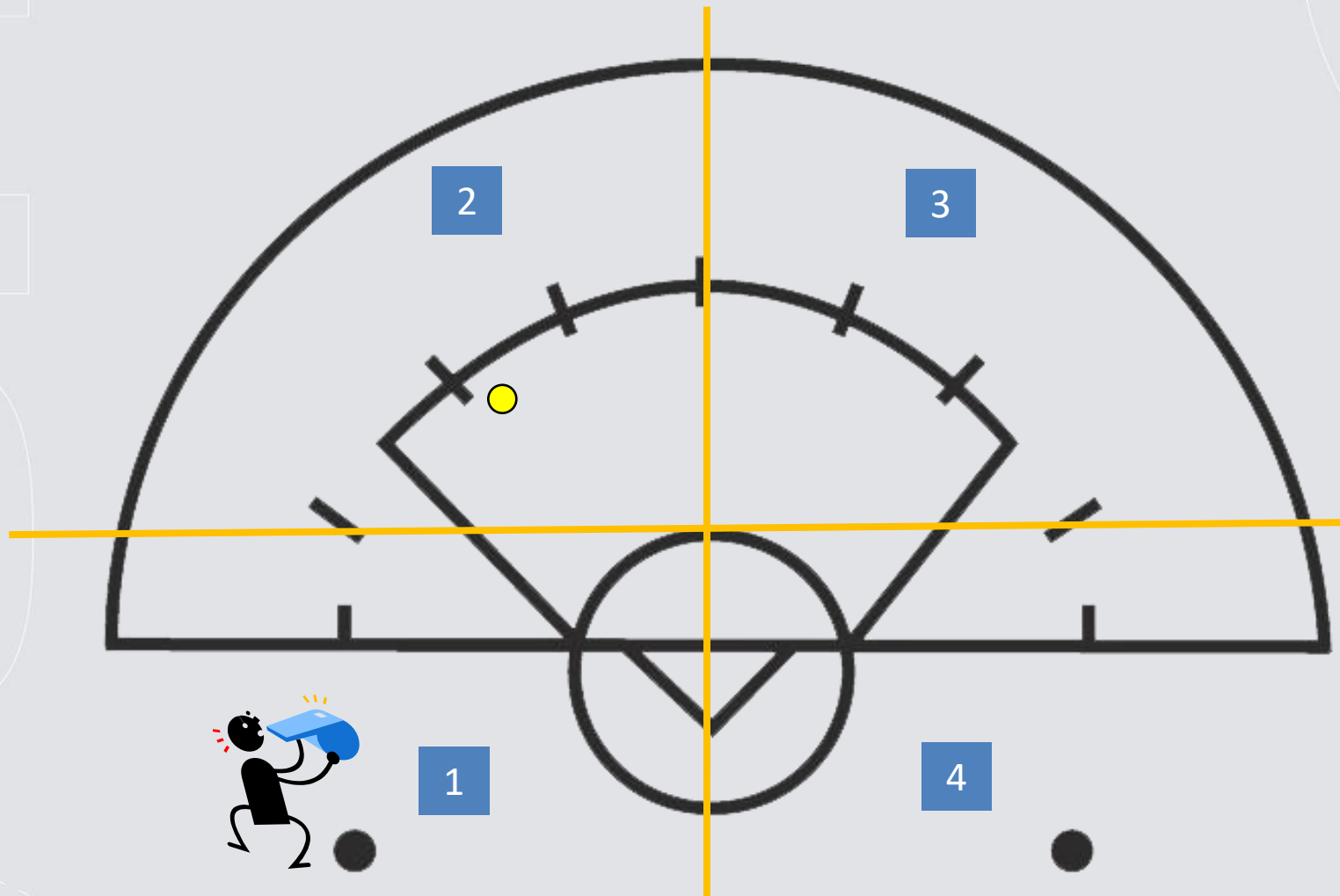
Lead Quadrant Positioning



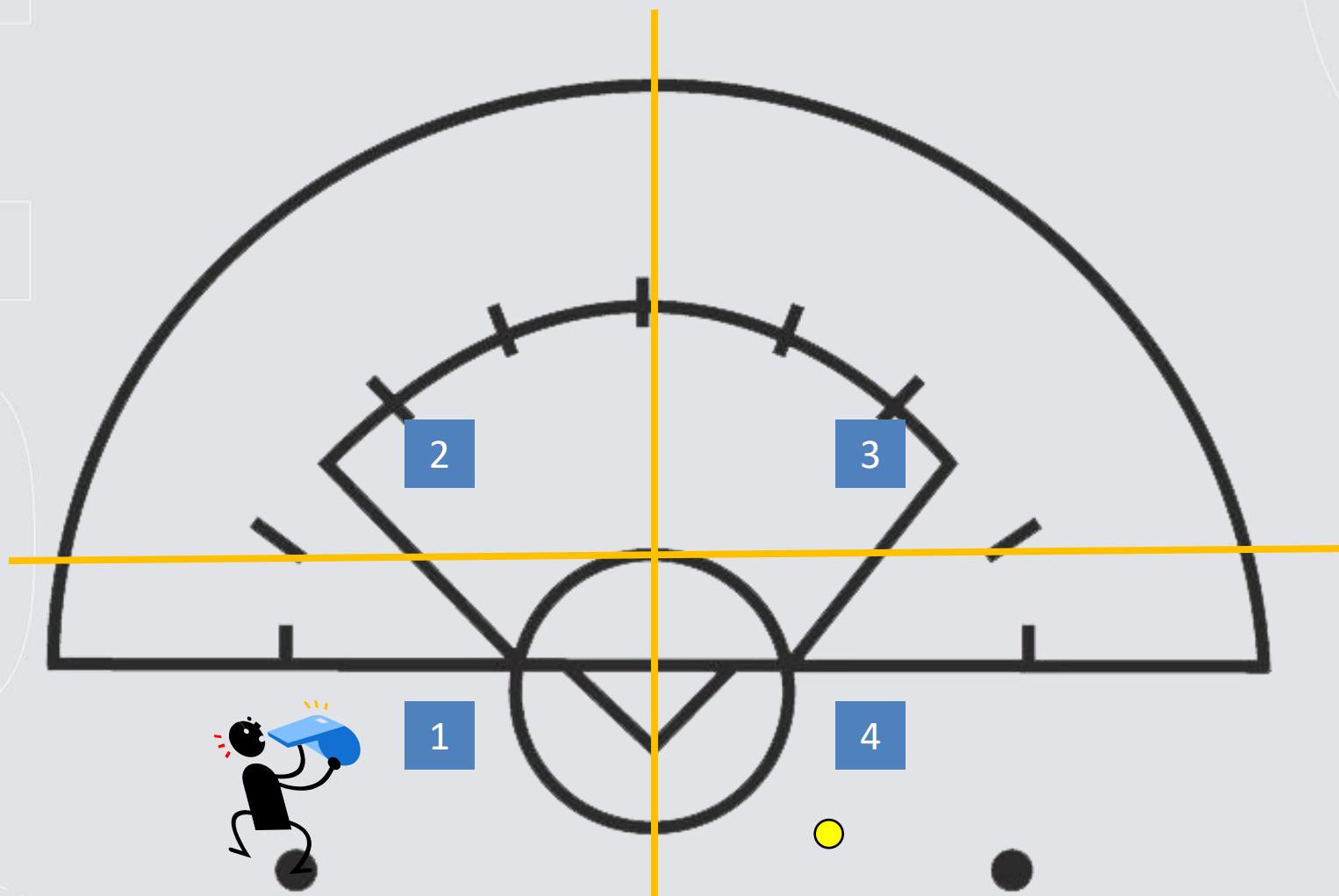
Lead Quadrant Positioning



Lead Quadrant Positioning



Lead Quadrant Positioning



Transition



Trail to
Lead

- Stay ahead of and outside the ball
- Position your body to keep play and players in your vision
- Maintain a “view” of the action into CSA

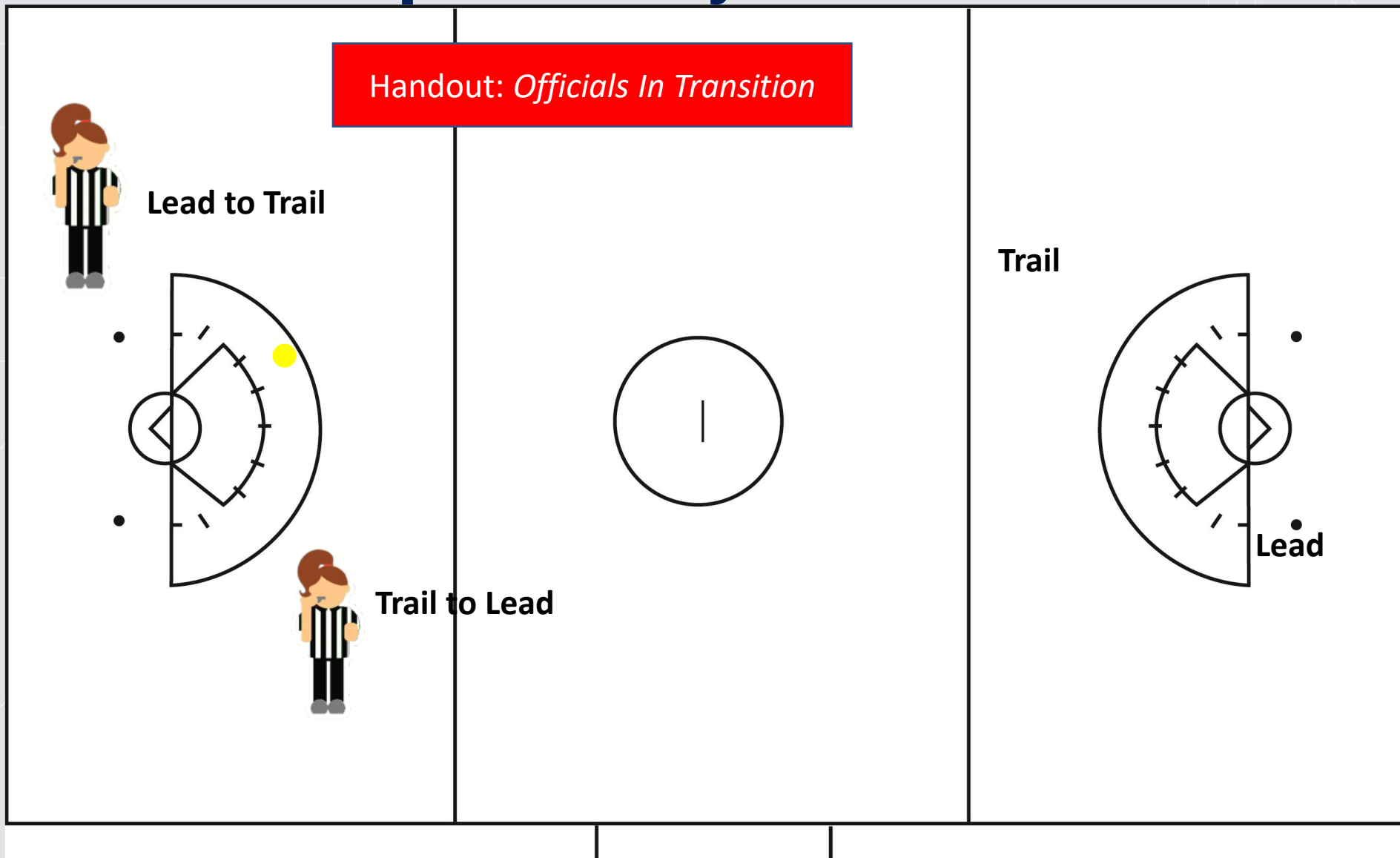
Lead to
Trail

- Count players ahead of you
- Stay up with play, run through restraining line
- Anticipate where the play is going

ACTIVITY:
Officials in Transition

Responsibility in Transition

Handout: *Officials In Transition*



Restart Guidelines

Officials manage restarts in their “third” of the field

Each official **always** manages restarts on their sideline and endline boundary

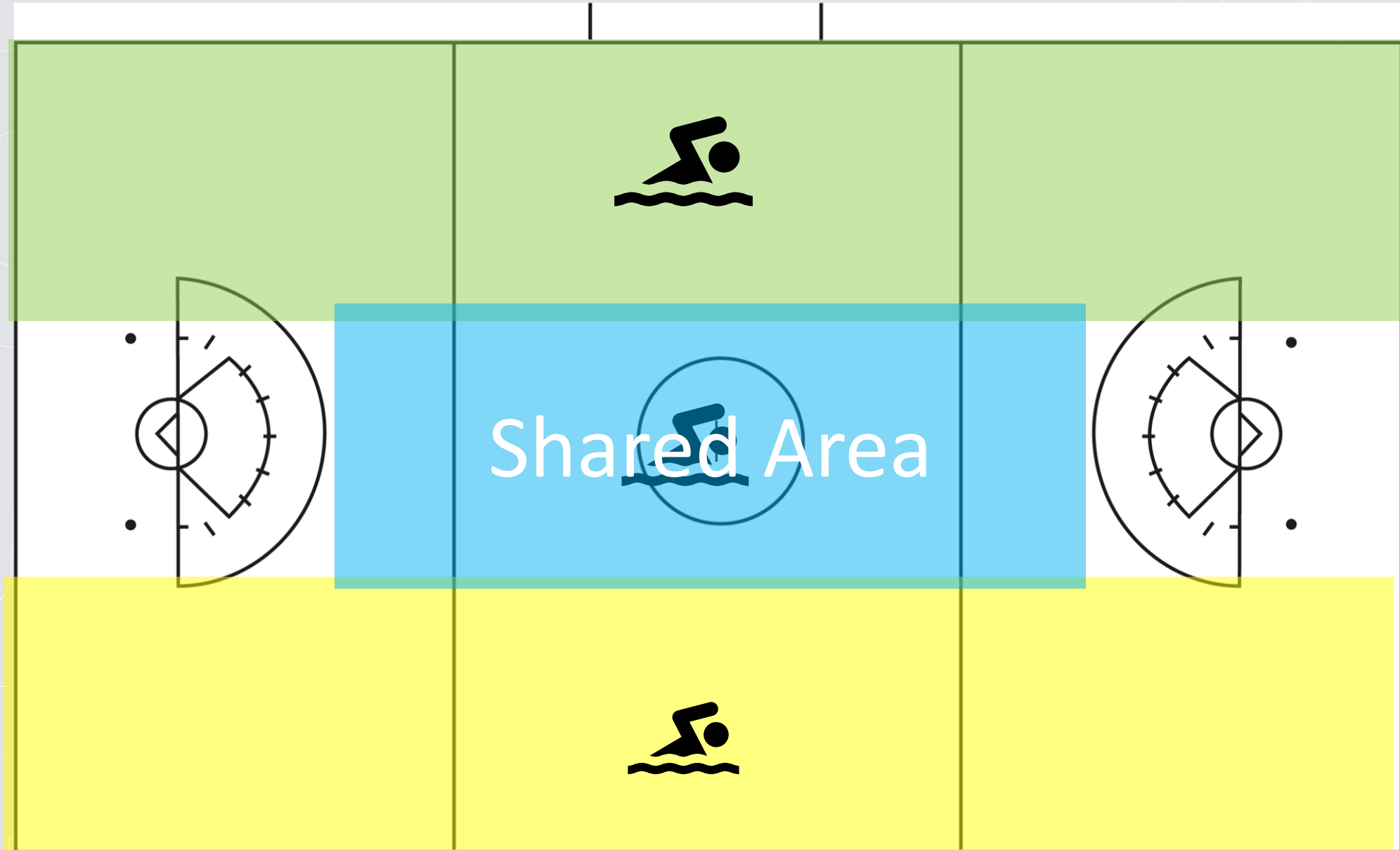
Lead Official whistles all restarts in the CSA

Know when to release monitoring restart to partner

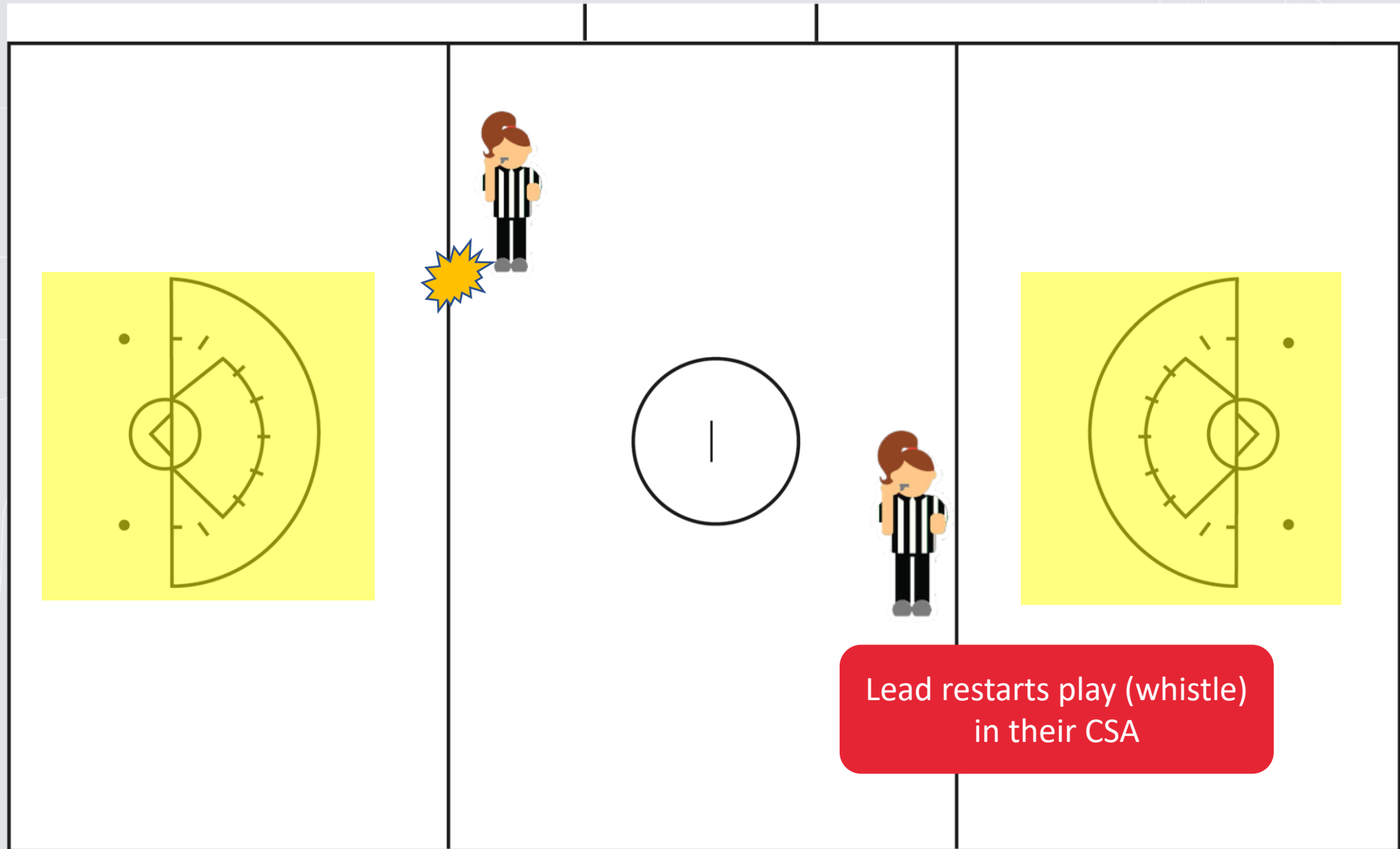
Step up as Trail to manage restarts when your partner is transitioning to Lead



Restart Guidelines




Restart Guidelines



Teamwork and Communication

Girls' Lacrosse Pre-game Checklist

Officials' Attire and Equipment <ul style="list-style-type: none">• Striped shirt in good condition. Black shorts/kilt/pants, black shoes (in good condition/fit properly)• Whistle, yellow flag, cards, NFHS Rule Book, tape measure, pen or pencil, watch, golf ball, coin.• Black Accessories: hat/visor, jacket, gloves, turtleneck, etc.• Be neat/presentable (shirt tucked in, clean uniform, on time, etc.)			Key Rule Changes in 2026 <ul style="list-style-type: none">• The free position for one player drawing illegally will be administered at the spot of the ball. Any player may restart.• Stick check requests may only occur during a quarter break, halftime, a team time-out, prior to the start of overtime, prior to a draw and following the goal at the end of regulation or overtime.• For a goal circle violation the offender will move 4 meters away from the restart.• Following a possession time-out called in the CSA, the ball will restart at the dot.																							
Walk the Field Together <ul style="list-style-type: none">• Note the color of all lines.• check the nets for holes; ensure the goal is lined up correctly (back of goal posts on back on goal line)• check the field for correct markings (pace off 8m Arc and 12m fan)• Flags at corners of field and cones defining substitution area.• Note any hazards on the field (holes, protruding sprinkler heads, etc.)• Have a thorough discussion with partner(s) (suggested topics on back)				Table Personnel Discussion <ul style="list-style-type: none">• Confirm table personnel are aware of responsibilities (provide Timer Responsibility sheet) and scorer will record all cards.• Confirm 2-way communication from table when clock administrator is located elsewhere (Press box, etc.)• Make sure all needed equipment is in place/working.• Identify site manager and where they are located.• Identify trainer/health care provider, if available, and where they are located.• Confirm that balls to be used for the contest are NOCSAE-certified.• Identify Alternate Possession indicator. Confirm it is pointing in correct direction after coin toss.																						
Suggested Pregame Protocol <table><tr><th>Real Time</th><th>Clock Time</th><th>Activity</th></tr><tr><td>4:20</td><td>30:00</td><td>Field Open</td></tr><tr><td>4:45</td><td>05:00</td><td>Captains' Meeting</td></tr><tr><td>4:50</td><td>00:00</td><td>Clear field/stick checks</td></tr><tr><td>4:55</td><td>00:00</td><td>Lineups Announced</td></tr><tr><td>4:57</td><td>00:00</td><td>National Anthem</td></tr><tr><td>5:00</td><td>00:00</td><td>Opening Draw</td></tr></table>			Real Time	Clock Time	Activity	4:20	30:00	Field Open	4:45	05:00	Captains' Meeting	4:50	00:00	Clear field/stick checks	4:55	00:00	Lineups Announced	4:57	00:00	National Anthem	5:00	00:00	Opening Draw	Coaches' and Captains' Meeting <ul style="list-style-type: none">• Introduce self to coaches and players. Ask players to introduce themselves to other team.• Coaches must certify that all players are legally equipped, and that equipment is NOCSAE- and ASTM-certified: Goggles ASTM 3077; Headgear ASTM 3137• Identify all lines/boundaries for visiting team.• Conduct coin toss. Winning team chooses first Alternate Possession OR end of field they want to defend for first quarter.• Ask if coaches/players have any questions.		
Real Time	Clock Time	Activity																								
4:20	30:00	Field Open																								
4:45	05:00	Captains' Meeting																								
4:50	00:00	Clear field/stick checks																								
4:55	00:00	Lineups Announced																								
4:57	00:00	National Anthem																								
5:00	00:00	Opening Draw																								

Establishes:

- ✓ Common understanding
- ✓ Efficient transitions
- ✓ Professional Presence
- ✓ Partner Support

HAND OUT:
Two Person Pregame
Checklist





usalacrosse.com